

June, July, and August



Summer 2009



Our 50th Annual Poetry Concert

As we have for 50 years, we celebrated the winners of our annual contests with a “Concert” on May 17th, so called because it is an event of singular readings by individual voices, a performance. Winners and honorable mentions presented their poems with introductions by board member Mary Ruth Donnelly, and High School Contest judge, Robert Lowes. CONGRATULATIONS! Read more and see the winners with their poems listed on page 2.

The Ledbetter Award

The “Loy Ledbetter Award” will be given annually to acknowledge significant contributions to the Poetry Center, its members and programs, starting with the ever faithful and diligent, Loy Ledbetter. The full award can be seen on page 3, along with information about artist and poet Ed Boccia, whose artwork is featured on the award.

Night of *The Voyage*

Invitation to the Voyage, a champagne reception benefiting the St. Louis Poetry Center took place on March 25th at White Flag. Special thanks to David Robertson, Music Director of the Saint Louis Symphony Orchestra, writer William Gass and poet Mary Jo Bang at Washington University, Poet at Washington University, for giving us a memorable evening of French poetry. Thanks also to White Flag Projects, The Wine and Cheese Place, Mangia Italiano, Bliss Collaborative and Agave Mexican for parking. With friends like these, we can continue to grow and serve the greater St. Louis community. More photos, pg 5.



Saint Louis Symphony Music Director, David Robertson discussed one of the translations with a young guest.

SLPC Mission Statement

Our passion for poetry guides us to encourage people of all ages and backgrounds to participate in the infinite possibilities of the written and spoken word. We conduct workshops, contests, outreach programs, and readings to promote poetry in the community.

You can help the St. Louis Poetry Center by bringing used books – novels, poetry, non-fiction – to the Sunday Workshops. The books will be turned in for credit to the SLPC at Left Bank Books.

In this Issue

- Poetry in Motion Awards, page 2
- Winners for the 2009 Annual Contests, page 2
- The Ledbetter Award, page 3
- “Marathon Metamorphoses” at the Pulitzer, page 3
- Poetry at the Point, page 4
- River Styx events, page 5

2009 SLPC Board Members:

- | | | |
|---------------------------|----------------------------------|-----------------------------------|
| Mary Ann deGrandprè Kelly | Marie Chewe-Elliott | Katherine Mitchell |
| Dean O. Grubbs | Robert Lowes | LaVelle Wilkins-Chinn |
| Mary Ruth Donnelly | Lynn Kuss | Loy Ledbetter, President Emeritus |
| Keith Byler, President | Nancy Hughes, Executive Director | |

For newsletter submissions, email Elizabeth Durdel at newsletter@stlouispoetrycenter.org Fall deadline is August 7th

Our 50th Annual Poetry Concert

cont. from page 1



from left to right, Maurice Hirsch, Jr., Richard Newman, Kara Moyer, and Catherine Rankovic



Mary Ruth Donnelly, master of ceremonies with fellow poet, Alice Azure

The concert was excellent with nearly all winners represented; fourteen poets, and two publishers. The concert booklet is available for purchase and will be on display at other Poetry Center events... many thanks to Mary Ruth Donnelly for pulling together all the details and to Susan Stevens for mastering the layout long distance. The booklet, in honor of our 50th, also features poems from past winners, including Walter Barga, the current Missouri Poet Laureate, and Kevin Stein, 2003 Poet Laureate of Illinois. Once

again, The Regional Arts Commission provided an excellent space for the event with excellent coordination thanks to staff, Rob Levy. Revisit the concert with Dalton's poem, or have your first taste of this outstanding event.

Grandpa
Dalton Pollvogt

"I know some stuff.
I've been around a long time.
I've seen some stuff in my day –
Let me tell you.

A boy your age shouldn't be this stressed out.
You shouldn't have to deal with stuff like that.
There is always another way of looking at a situation.
Let me tell you.

Never assume anything.
That is six one – half dozen of another.
There is more to learning than school
You know what, I like you."

These are the things that he used to say –
when I wasn't listening.

*First Prize, Beverly Hopkins Memorial Contest
for High School Students,
Judge: Robert Lowes
High School: Saint Louis Priory School
Teacher: Fr. Ralph Wright*

Poetry in Motion 2009 Winners!!

Sponsored by Metro Arts in Transit and the Poetry Society of America. SLPC members took SIX out of a total of fifteen awarded poems. The poems will be featured with artwork on buses and metro trains and stations.

"Flying Across Kingshighway," by Dwight Bitikofer

"Afternoon Storm on the Mississippi," by Edmund de Chasca

"Louis IX in Missouri," by Mary Ruth Donnelly

"May the Words" by Niki Nymark

"Searching" by Carlos Pappalardo

"Self Portrait with Winter" by Catherine Rankovic

The Winners for the 2009 St. Louis Poetry Center Annual Contests

The Stanley Hanks Memorial Contest for Missouri Poets Judged by Wyatt Townley

First Prize: "Shore Birds," by Steve Paul
Appeared in *New Letters*
Editor: Robert Stewart

Second Prize: "Jellyfish," by Barbara Freimuth
Appeared in *River Styx*
Editor: Richard Newman

James H. Nash Members Only Contest Judged by Jenny Mueller

First Prize: "Photograph, Faded to Sepia"
Sue Howell

Second Prize: "Making Do"
Connie McIntyre

Third Prize: "Self Portrait in the Twentieth Century"
Catherine Rankovic

Honorable Mentions:
"Sparta, Illinois 1962"
Maurice L. Hirsch, Jr.
"deZert"
gaye gambell peterson

Beverly Hopkins Memorial High School Contest Judged by Robert Lowes

First Prize: "Grandpa," by Dalton Pollvogt

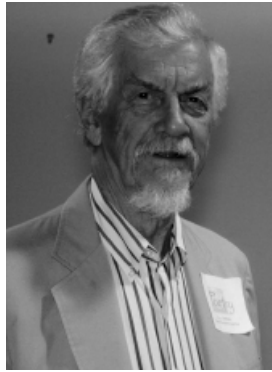
Second Prize: "Rust," by Ben Constantino

Third Prize: "The Ball," by Kerry Gaynor

Honorable Mentions:
"Winter Driving," by Charlie O'Donnell
"Ode to Goodwill Sweater,"
by Kerry Gaynor
"Motivation," by Richard Copeland
"The Serve," by Alec Willman

The Annual Ledbetter Award; The Man and the Award

Loy Ledbetter has served the St. Louis Poetry Center since the early 80's definitively carrying the role of Board Treasurer and President for a number of terms. During most of those years the Poetry Center was board run and operated without a paid staff, leaving the Board president to function as a volunteer director. Loy was key in keeping the center active and focused on its mission to serve poets and poetry audiences in the St. Louis region. Most of the board, past and present, are serving or have served at Loy's invitation. He has been instrumental in growing the center into a vibrant organization, bringing his business smarts and philanthropist's heart to bear on the work of the Poetry Center. Loy is also a fine photographer and like Ed Boccia, inhabits that rare combination of visual artist and perceptive poet.



Loy Ledbetter
(photo by Robert Lowes)

Edward Boccia contributed his drawing "The Poet" for the Loy Ledbetter Award. Boccia is a painter, poet and former board president of the St. Louis Poetry Center. He is Professor Emeritus, School of Fine Arts, Washington University, St. Louis, Missouri. His paintings are in public and private collections in the USA, Europe and South America. Robert Peters of the Small Press Review has written: "Edward Boccia is crammed with originality and skill for half a dozen poets. He is that fusion of the successful visual artist who is also a fine poet – a rare combination."



*The Loy Ledbetter Award
Awarded by the Board of
Directors
for outstanding
contributions
to the
St. Louis Poetry Center, its
members, and its
programs.*

*2009 Recipient:
Loy Ledbetter,
President Emeritus*

Poetry Center at The Pulitzer

The Poetry Center will collaborate with the Pulitzer Foundation for the Arts and River Styx to present "A Marathon Metamorphoses" a marathon reading of Ovid's master work on August 29th and 30th, in conjunction with the Pulitzer's Old Masters exhibition.

More than sixty members from the St. Louis community will read passages over the course of two days, beginning at 10 a.m. and ending at approximately 7 p.m. each day. The event will take place in the Pulitzer's galleries at 3716 Washington Boulevard, 63108 and is free and open to the public. Readers will be announced soon.

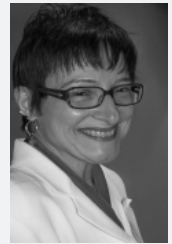
Winners from the Annual Concert cont. from page 2



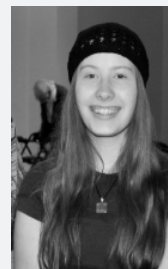
Susan Howell,
first place
winner in James
H. Nash Contest



Connie McIntyre,
second place
winner in
James H. Nash
Contest



Catherine
Rankovic, third
place winner in
James H. Nash
Contest



Kerry Gaynor,
honorable men-
tion and third
place winner
in high school
Contest



Barbara
Freimuth,
second place
winner in the
Hanks Memori-
al Contest



Bud Hirsch,
honorable men-
tion winner in
James H. Nash
Contest

POETRY AT THE POINT

is held at
THE FOCAL POINT,
2720 Sutton Blvd,
at 7:30 pm
on the 4th Tuesday of the
month
Doors open at 7:00pm

KUDOS:

June 23rd

Lisa Pepper... holds an MFA in Poetry from University of Pittsburgh. Her work has appeared in the journals *Black Clock, Delmar, Literal Chaos, and River Styx*. In 2005, she was featured in the documentary *City of Asylum*, about the poet in exile Huang Xiang. She was a university writing instructor for four years and now works as an editor for the Flora of China Project.

Lisa Ampleman... a St. Louis native, received her bachelor's degree from Beloit College in Wisconsin and her MFA from George Mason University in Virginia. Her poems have appeared or are forthcoming in *Passages North, Notre Dame Review, Court Green, Natural Bridge, Center, Folio, and So to Speak*, and she was the recipient of second place in the 2008 Wednesday Club poetry contest. She teaches at Fontbonne University.

July 28th

Winners from the 2009 Beverly Hopkins Memorial High School Poetry Contest including Pollvogt, Constantino, Gaynor, O'Donnell, Copeland and Willman with guest appearances from their Creative Writing teachers. Join us and encourage these young poets.

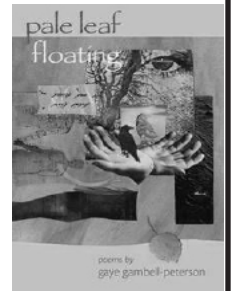
August 25th

Robert Lowes... is an independent journalist in St. Louis who specializes in health care. His poetry has appeared in *The New Republic, The Tampa Review, Jabberwock Review, Margie, Hiram Poetry Review, Sentence: A Journal of Prose Poetics*, and other journals. He holds an MFA in creative writing from UMSL, St. Louis, where he won the graduate poetry prize twice. He is seeking a publisher for a manuscript of poems titled, "An Honest Hunger".

Katy Miller... received her B.A. in English from Vanderbilt University and her MSW from Washington University. Professionally, she began in public relations in Washington, DC, and for the past nine years she has been a social worker. She is married with two children, ages 5 and 3. Katy has been involved with the St. Louis Poetry Center since 2007. Several of her poems have been published in *MARGIE, vol. 6 and 7*, and she was a winner of the Arts in Transit Poetry in Motion poetry contest in St. Louis in 2008. She currently serves as secretary on the Board for the Poetry Center.

gaye gambell-peterson... is a professional artist with one foot passionately planted in the poetry world. She's currently leaping with both feet into an art+poetry universe with two books published in 2009 (*pale leaf floating* – Cherry Pie Press; *MYnd mAp* – Agog Press). She is launching the first of these books, the ninth in the *Midwest Women Poets Series* on August 25th at the Focal Point reading. www.gayegambellpeterson.com.

Now available is **gaye gambell-peterson's** new chapbook, *pale leaf floating*, in the ninth the *Midwest Women Poets Series* from Cherry Pie Press. The chapbook also features six illustrations by the author. Left Bank Books (314-367-6731) or cherryriepress@yahoo.com.



Gail Eisenhart's poems will be published this spring in the Montana State University Journal MO: *Writings from the River*. She will also have a poem published this July in *Kaleidoscope*. Her chapbook manuscript, *Pilgrim's Provenance* was a finalist for the Flip Kelly Poetry Prize offered by Amsterdam Press.

gaye gambell-peterson has two poems plus art in the spring issue of *Mid Rivers Review*, and two poems in the spring issue of *Untamed Ink*.

Karen Smead Mondale has poems coming out in the *Mid Rivers Review*, a Literary Journal and in the upcoming *Anthology of St. Louis Poetry*.

Robert Nazarene has new poems forthcoming in *African American Review, Notre Dame Review, Prairie Schooner* & elsewhere. He is presently in a mutual collaboration on a new book with National Book Critics Circle award winning poet, Troy Jollimore, titled: "Tom Thomson Finds He Has A Twin." Robert gave a series of readings in California in May. *Margie/ The American Journal of Poetry, Vol VIII* will appear this autumn.

In honor of National Poetry Month, the St. Louis Writers Guild's Poetry Throwdown for the best poem, instantaneous, anything-goes poetry contest from Dickinson to Nelly to Blake to Bukowski, original work only-- took place on Saturday, April 18th, at The Focal Point. Local Poet, **Marcel Toussaint**, read his poems "She Drove a Red Convertible" and "Observing From The Corner." The poems took third place among 23 poets' entries, a total of 46 poems.

Sally Van Doren read at the Inaugural Princeton Poetry Festival, April 27 and 28, organized by poet Paul Muldoon, the chairman of the University's Lewis Center for the Arts.

Poetry Center member **Becky Ellis**, as publisher of Cherry Pie Press is pleased to announce their name mention in the blurb prefacing *Poets & Writers'* list of small presses in their May 26th email Newsletter, with a featured image of the Cherry Pie Press' Logo, designed by member and poet **gaye gambell-peterson**. Congratulations to both of our member poets on some great press!

Tim Leach received the James Russel Grant poetry award for graduate students from UMSL. He will have work appearing in *New York Quarterly, The Sow's Ear*, and *The Tulane Review*.

Announcements

Volume 10 of *Mid Rivers Review*, the annual literary journal published by the English Department at St. Charles Community College, should be available in the campus bookstore by May 1, 2009. For information, please contact the editor, Teddy Norris, (636) 922-8407 or tnorris@stchas.edu. Congratulations to the SLPC writers whose work is included in this issue!

Other Readings

Stone Spiral Cafe

at Sutton and Lyndover in Maplewood
features an open mic night (music and poetry)
every Wednesday evening.
Call to confirm: 355-7388
A number of SLPC poets have already
presented their work.

River Styx Events Summer 2009

All events are at Duff's Restaurant
392 N. Euclid Ave in the Central West End
at 7:30 pm. Admission is \$3.

June 15th

The featured poets are Erin M. Bertram, Mark McKee, Alison Palmer, Chad Parmenter, Julie Platt, and Andrea Thorsen. The Falling Martins will provide music.

July 20th

The featured poets are Shane Signorino, Kara Moyer, Kyle Kloster, Olivia Ayes, Paul Barker, and Erin Quick. The Sampson Mengsteab Trio will provide music.

August 17th

The featured poets are Lauren Keefer, Heath Garrett Luster, Julie Goldberg, Laura Dempsey, Travis Mossotti, and Annah Browning.

SLPC OUTREACH POETRY WORKSHOPS: City and county after-school programs:

Midtown Catholic Charities Community Center on South Boyle:
after school poetry workshops serving students from 20 city schools,
ages 5 to 18, from October to May.

Friends with a Better Plan contracts yearly for 5 city high schools
with three consecutive workshops at each.

Hazelwood East Middle School: afterschool workshops, our second
year here.

Other sites pending funding:

Alton High School Creative Writing Classes: visiting poets

Dupo Middle School: Poetry Month celebration

St. John the Baptist Elementary School: After-school workshops

Spoeede Elementary School: "Lunch Bunches" poetry workshops

Soulard Charter School: Poetry Month activities

After school poetry workshops serving students from 20 city
schools, ages 5 to 18, from October to May, now in our fourth year.

Thanks to a grant from Target we are now working with early readers
at Midtown as well.

Interchange:

As a partner is this program bringing the arts to our city schools we
have two poet educators teaching in multiple classrooms during the
school day. The goal is to use the arts to enhance learning in core
curriculum areas like history, language arts, science and math.

OTHER outreach programs:

St. Louis County Jail and Grace and Peace Women's Shelter.

SUBMIT YOUR WORK TO RIEHL LIFE: VILLAGE
WISDOM FOR THE 21ST CENTURY (<http://www.riehlife.com>)

Benefits of publishing online include: more immediate feedback, a wider audience, and an electronic footprint for you and your work on the web that lasts virtually forever. The focus is on creating connections through arts and across cultures and family heritage. Work is accepted throughout the year.

Night of *The Voyage* cont. from page 1



Reading for the event, writer William Gass and Saint Louis Symphony Music Director, David Robertson.



Writer William Gass with close friend and event chair, Lorin Cuoco.



Poetry Center friends and board members, Katherine Mitchell, Keith Byler, and Sally Van Doren, enjoy the reception.

*All photos by Robert Lowes

THE ST. LOUIS POETRY CENTER

June, July and August 2009

567 North and South, #8

St. Louis, Mo 63130

www.stlouispoetrycenter.org

314-973-0616



Membership expired? inquiries at info@stlouispoetrycenter.org or use your credit card or paypal on the website: www.stlouispoetrycenter.org.

Join the St. Louis Poetry Center

The St. Louis Poetry Center offers, free of charge, to Members and non-members admission to our 3rd Sunday Workshops, various readings, the Annual Concert, and The SLPC Newsletter. Joining the SLPC helps fund our various readings, workshops and outreach programs. Help us continue to grow by mailing this form and a check payable to the SLPC to: St. Louis Poetry Center, 567 North and South, #8, St. Louis, MO 63130.

- _____ **Member \$30** All the above plus priority registration for SLPC special fee workshops and eligibility to enter the annual Members-Only Poetry Contest with cash prizes.
- _____ **Special Member rate for students, \$15** Available to any full-time student (please include a photocopy of your student I.D. card)
- _____ **Sponsor \$50** All the Member benefits plus a copy of *Margie- Journal of American Poetry, Vol. VII*
- _____ **Patron \$100** All the Member benefits plus a copy of *Can Poetry Matter (Essays)* by Dana Gioia
- _____ **Laureate \$150 and over** All the Member benefits plus a copy of *New European Poets* edited by Wayne Miller & Kevin Prufer

_____ I would like to provide additional support to this historic organization. Please receive my tax-deductible contribution of _____

_____ Please receive my tax-deductible donation of _____ in (memory of / honor of) _____

Please print:

Name _____ Phone _____ E-mail _____

Address _____ City, State and Zip _____